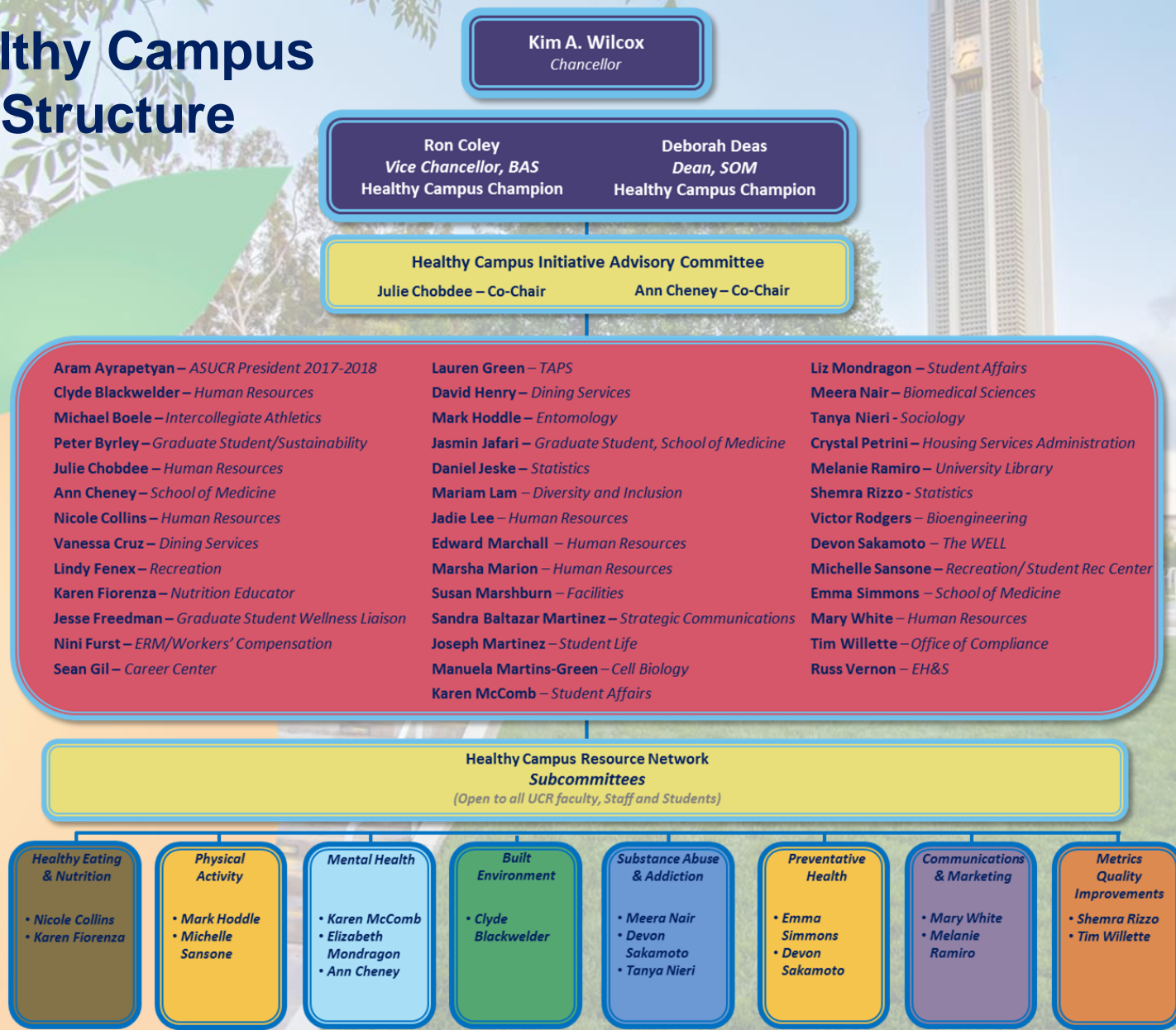


# UCR Healthy Campus Initiative Structure



**Kim A. Wilcox**  
Chancellor

**Ron Coley**  
Vice Chancellor, BAS  
Healthy Campus Champion

**Deborah Deas**  
Dean, SOM  
Healthy Campus Champion

**Healthy Campus Initiative Advisory Committee**

**Julie Chobdee** – Co-Chair

**Ann Cheney** – Co-Chair

- Aram Ayrapetyan** – ASUCR President 2017-2018
- Clyde Blackwelder** – Human Resources
- Michael Boele** – Intercollegiate Athletics
- Peter Byrley** – Graduate Student/Sustainability
- Julie Chobdee** – Human Resources
- Ann Cheney** – School of Medicine
- Nicole Collins** – Human Resources
- Vanessa Cruz** – Dining Services
- Lindy Fenex** – Recreation
- Karen Fiorenza** – Nutrition Educator
- Jesse Freedman** – Graduate Student Wellness Liaison
- Nini Furst** – ERM/Workers' Compensation
- Sean Gil** – Career Center
- Lauren Green** – TAPS
- David Henry** – Dining Services
- Mark Hoddle** – Entomology
- Jasmin Jafari** – Graduate Student, School of Medicine
- Daniel Jeske** – Statistics
- Mariam Lam** – Diversity and Inclusion
- Judie Lee** – Human Resources
- Edward Marchall** – Human Resources
- Marsha Marion** – Human Resources
- Susan Marshburn** – Facilities
- Sandra Baltazar Martinez** – Strategic Communications
- Joseph Martinez** – Student Life
- Manuela Martins-Green** – Cell Biology
- Karen McComb** – Student Affairs
- Liz Mondragon** – Student Affairs
- Meera Nair** – Biomedical Sciences
- Tanya Nieri** – Sociology
- Crystal Petrini** – Housing Services Administration
- Melanie Ramiro** – University Library
- Shemra Rizzo** – Statistics
- Victor Rodgers** – Bioengineering
- Devon Sakamoto** – The WELL
- Michelle Sansone** – Recreation/ Student Rec Center
- Emma Simmons** – School of Medicine
- Mary White** – Human Resources
- Tim Willette** – Office of Compliance
- Russ Vernon** – EH&S

**Healthy Campus Resource Network Subcommittees**  
(Open to all UCR faculty, Staff and Students)

**Healthy Eating & Nutrition**

- Nicole Collins
- Karen Fiorenza

**Physical Activity**

- Mark Hoddle
- Michelle Sansone

**Mental Health**

- Karen McComb
- Elizabeth Mondragon
- Ann Cheney

**Built Environment**

- Clyde Blackwelder

**Substance Abuse & Addiction**

- Meera Nair
- Devon Sakamoto
- Tanya Nieri

**Preventative Health**

- Emma Simmons
- Devon Sakamoto

**Communications & Marketing**

- Mary White
- Melanie Ramiro

**Metrics Quality Improvements**

- Shemra Rizzo
- Tim Willette